

FEDERATION OF UNITED SCHOOL EMPLOYEES

# FUSE LOCAL 1212

AFFILIATED WITH THE LABORERS' INTERNATIONAL UNION OF NORTH AMERICA



5000 Rocklin Rd., Rocklin, California 95677  
(916) 660-8231 www.fuse1212.org

February 2011  
Volume 3, Issue 2

## **FUSE Executive Board Members Attend Leadership Training Academy**

In January, Kristie Purdy and Rick McMurtry participated in a 5-day conference at the LiUNA Leadership Training Academy, which is on the grounds of the National Labor College in Silver Spring, Maryland. Leadership training for union leaders occurs on an annual basis, and some classes are mandatory. In this five-day leadership training conference, a variety of classes are offered, most in a workshop format. Subject matters deal with contemporary issues facing union leaders, including topics such as "Building Internal Union Values," "Union Leadership Decision Making," and "Leadership Styles and Strategies." Although continuing education is extremely important to the success of union leadership, Rick and Kristie nearly cancelled their reservation to this event because they are so incredibly busy at work. But knowing how valuable these trainings are, they were convinced to carry through with their plan to attend. Returning rejuvenated and armed with new skills and perspective, they are glad that they went! Rick commented, "LiUNA leadership training is very informative and the college instructors are passionate about their jobs. These trainings are packed with valuable information to help us do our jobs better. In fact, just this week I used a new skill that I learned at last week's training in my job here at Sierra."

## **FUSE Negotiations**

FUSE Negotiators and the Executive board would like to thank John Lervold for his outstanding service and leadership as a FUSE Negotiator. John has assisted FUSE and the district in various capacities since 2002, including Negotiations, Omniparty, Health Benefits Subcommittee and Strategic Council, in addition to being a classified representative. John was also deeply involved with the writing of the formula. His vast knowledge and input as well as his calm and cheerful disposition were appreciated, and he will be missed! Stepping up to take John's place is Susan Keller, who is FUSE's Secretary-Treasurer. Sue has been a FUSE board member for 10 years in various capacities including business manager and secretary. She was also the chief negotiator for FUSE for several years, and brings an abundance of experience and skill to the table. Thank you, John, and welcome, Sue!

## **For Help Dial 1000**

We have all seen these signs around campus above the red phones. However, if you have a true emergency, the Sierra College security office recommends you dial 911 first. The security office will still get notification that the call has been made, but by dialing 911 instead of 1000, your call goes directly to the Rocklin Police Department and Fire Dispatchers and cuts out the middle man.



## Meet Leona Powell

Leona has been a custodian at our Nevada County campus for eight years. Prior to that, she was a general assistant/substitute custodian at NCC for a year and also a student helper for the Horticulture Department in Rocklin. Leona graduated from Sierra with degrees in Liberal Arts, Natural Science and Environmental Horticulture. Through her original course of study in Forestry at Sierra, she was able to work in the Forest Industry for many years. She says, "Working at Sierra I have found that the staff, from classified to faculty and management, all work hard to make the learning environment the best it can be for the students. In turn, the students really appreciate the work. I especially like that we can work collaboratively, something that isn't as common in the private sector. Working at NCC is another perk, we have the most gorgeous sunsets and can see the high Sierra, the Sutter Buttes and the Coast Range from the hill." Leona grew up in Reseda (southern California) and moved to Nevada County with her family after graduating high school. She's lived in Nevada City for more than 25 years with her husband Tom. They have one son who is also a student at our Rocklin campus. Leona has numerous hobbies, including leather crafting, oil painting, printmaking, sewing, gardening and currently she is doing counted cross stitch work. She also loves camping, fishing and riding her quad. Leona is an avid reader and some of her favorite authors include Tom Clancy, Lincoln Child, John Jakes, Edward Abbey and Mark Twain. What does Leona have to say about the union? "I worked at a sawmill once, and my experience with the union there was less than positive. I believe strongly that our union, FUSE 1212, having an all volunteer Executive Board, stewards and negotiators, is a much better union. Our representatives are ALL in the trenches with us every day. They see and know what we go through to accomplish our jobs. They all care and want the best working conditions for us. Thank you FUSE 1212. FEEL the POWER!"

## POLO DAYS



On the first and third Thursdays of every month, FUSE members report to the FUSE office spottings of fellow employees wearing their FUSE polo shirts. If you are spotted, you are eligible\* for a gift card to Starbucks, Jamba Juice or Subway! Plus wearing your FUSE polo on the first and third Thursday of every month eliminates the need to figure out what shirt to wear that morning, not to mention the support that you would be showing your union! Thank you to the following members who wore their FUSE polos in December and January: Joe Corro, Cary Cose, Michael Cory, Julio Hernandez, Katie Juras and Gerald Maris.

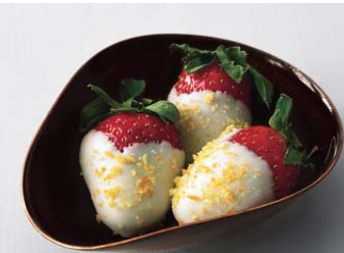
\*Members eligible for a gift card once every six months.

## Sweet Treats

### Here is a Sampling of Sweet Treats made in the USA

- Necco: Sweethearts, Wafers
- Hershey: Kisses, Kissables, Special Dark Bars, Nuggets, Symphony with Toffee Bars, Kit Kat
- Cadbury: Fruit & Nut Bar, Roast Almond, Royal Dark, Dairy Milk
- See's Candy
- Nestle: Treasures, Ghirardelli Chocolates
- Jelly Belly: Sweet Temptations, Candy Corn, Licorice, Sunkist Fruit Gel Slices
- Nestle: Treasures, Laffy Taffy, Baby Ruth, Butterfinger, Famous Old Time Candies
- Annabelle's: Boston Baked Beans, Jordan Almonds, Rocky Road, Look, Big Hunk

## White-Chocolate Dipped Strawberries with Citrus Sugar



- 2 tablespoons sugar
- 1/2 teaspoon finely grated orange peel
- 1/2 teaspoon finely grated lemon peel
- 6 oz high-quality white chocolate (such as Lindt) chopped
- 16 large strawberries with stems

Line a baking sheet with foil. Using fingertips, mix sugar and citrus peels in small bowl until sugar is moist. Stir chocolate in small bowl set over saucepan of barely simmering water until melted and smooth. Remove from over water.

Holding 1 strawberry by stem end, dip 2/3 of berry into chocolate; shake excess back into bowl. Turn berry dipped end up and sprinkle with citrus sugar. Place on prepared sheet. Repeat with remaining berries, chocolate, and sugar. Chill until chocolate sets, about 30 minutes.

## IT'S ALL GOOD!

Do you have good news to share about something on campus? Something delicious in the cafeteria, an act of kindness from a student or employee, baby geese waddling around? We would like to share it with our membership in this newsletter. You can remain anonymous, if you wish. Please email your responses to [sc-lnivinski@sierracollege.edu](mailto:sc-lnivinski@sierracollege.edu).

# February 2011

Sunday	Monday	Tuesday	Wednesday	Thursday	Friday	Saturday
		1 OMNIPARTY 1:00-4:00	2 NEGOTIATIONS 10:00-4:00	3 <b>POLO DAY!</b> <hr/> FUSE E-BOARD 8:00am	4 STRATEGIC COUNCIL 9:00	5
6	7	8 BOARD OF TRUSTEES 4:00	9 CLASSIFIED SENATE 12:00	10	11	12
13	14	15	16 NEGOTIATIONS 1:30-4:30	17 <b>POLO DAY!</b> <hr/> FUSE E-BOARD 8:00am	18 STRATEGIC COUNCIL 9:00	19
20	21	22 OMNI PARTY 1:00-4:00	23 CLASSIFIED SENATE 12:00	24 <b>GENERAL MEETING 9-11am BOARD ROOM</b>	25	26
27	28					

## **FUSE GENERAL MEETING FEBRUARY 24th**

Please join us for our next quarterly general meeting on Thursday, February 24, from 9am-11am in the board room. We will cover our regular agenda, answer any questions you may have, draw names for awesome raffle prizes and provide you with morning refreshments.